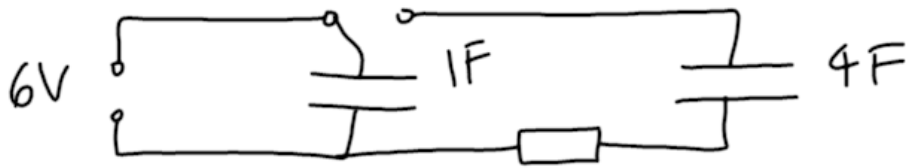


Capacitor discharging to a capacitor



A 1F capacitor is charged with a 6V power supply.

It is then connected in series with a fixed resistor (value not important) and an uncharged 4F capacitor.

1. How much charge is originally on the 1F capacitor?
2. How much charge ends up on each capacitor? Clue: charge redistributes until the voltage across each capacitor is equal.
3. Sketch a graph of voltage against time for the 1F capacitor.
4. Sketch a graph of voltage against time for the 4F capacitor.
5. Sketch a graph of voltage against time for the resistor.